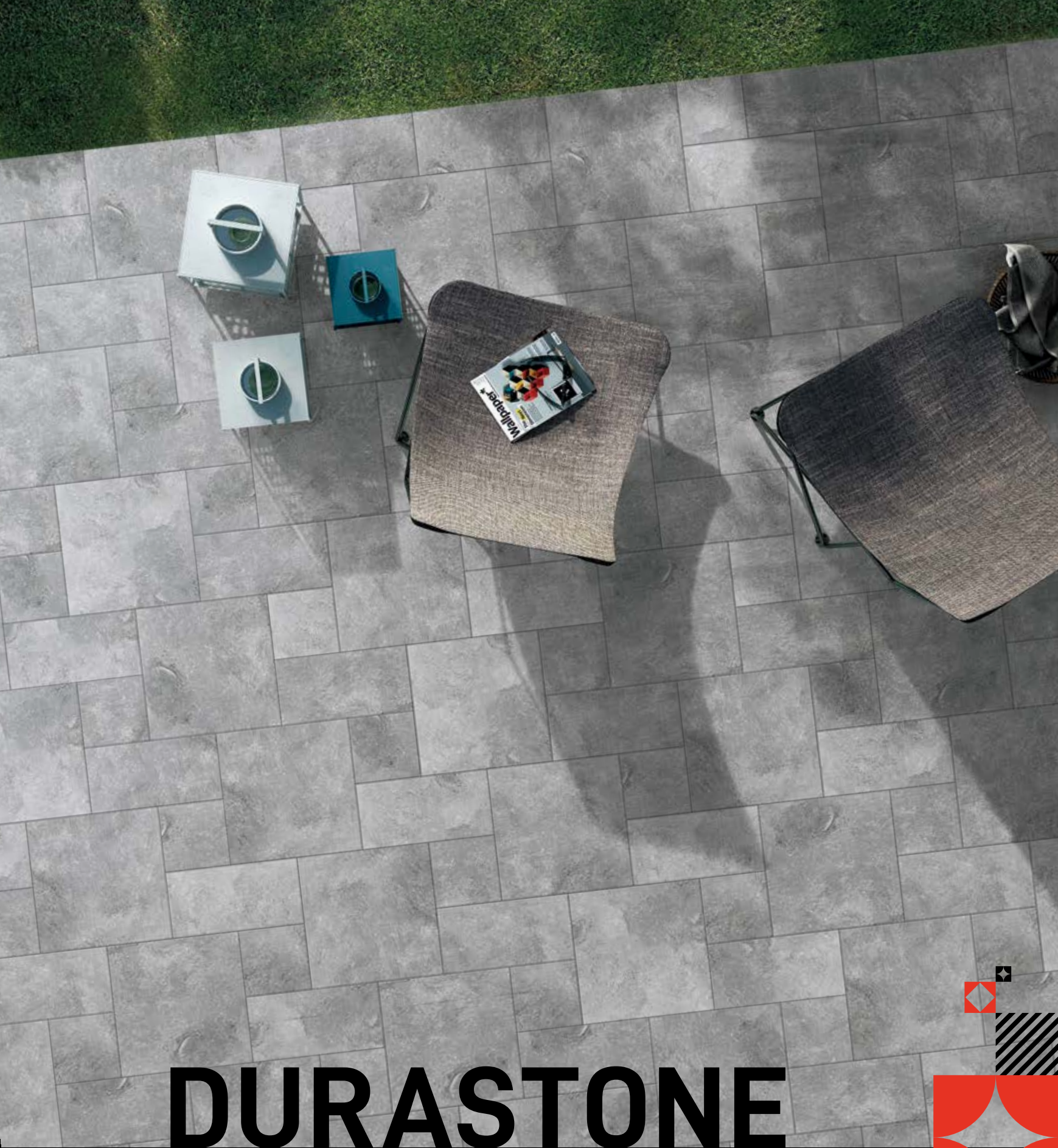
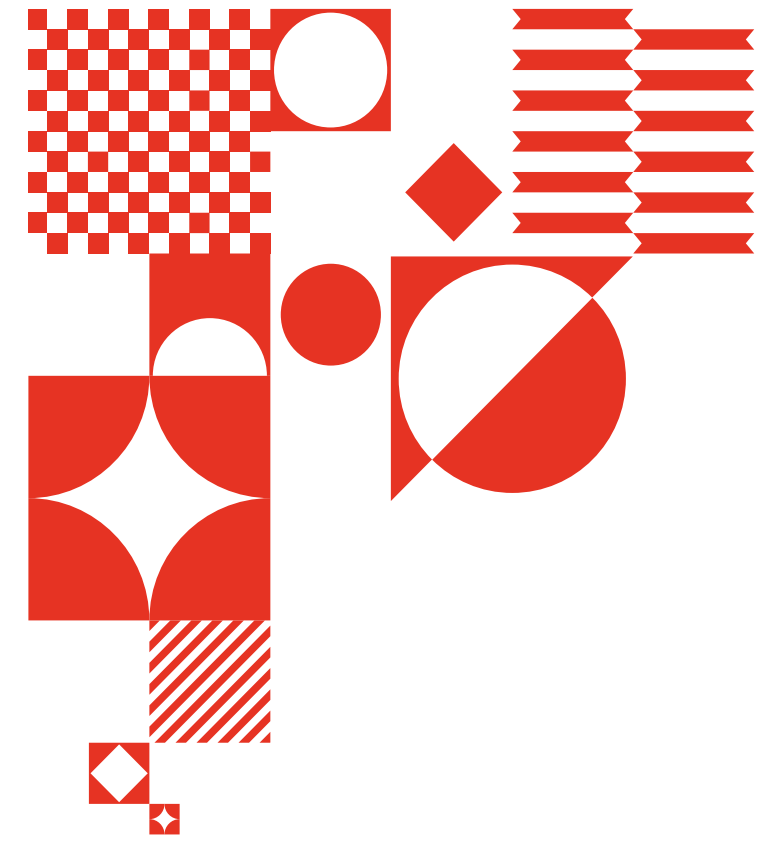
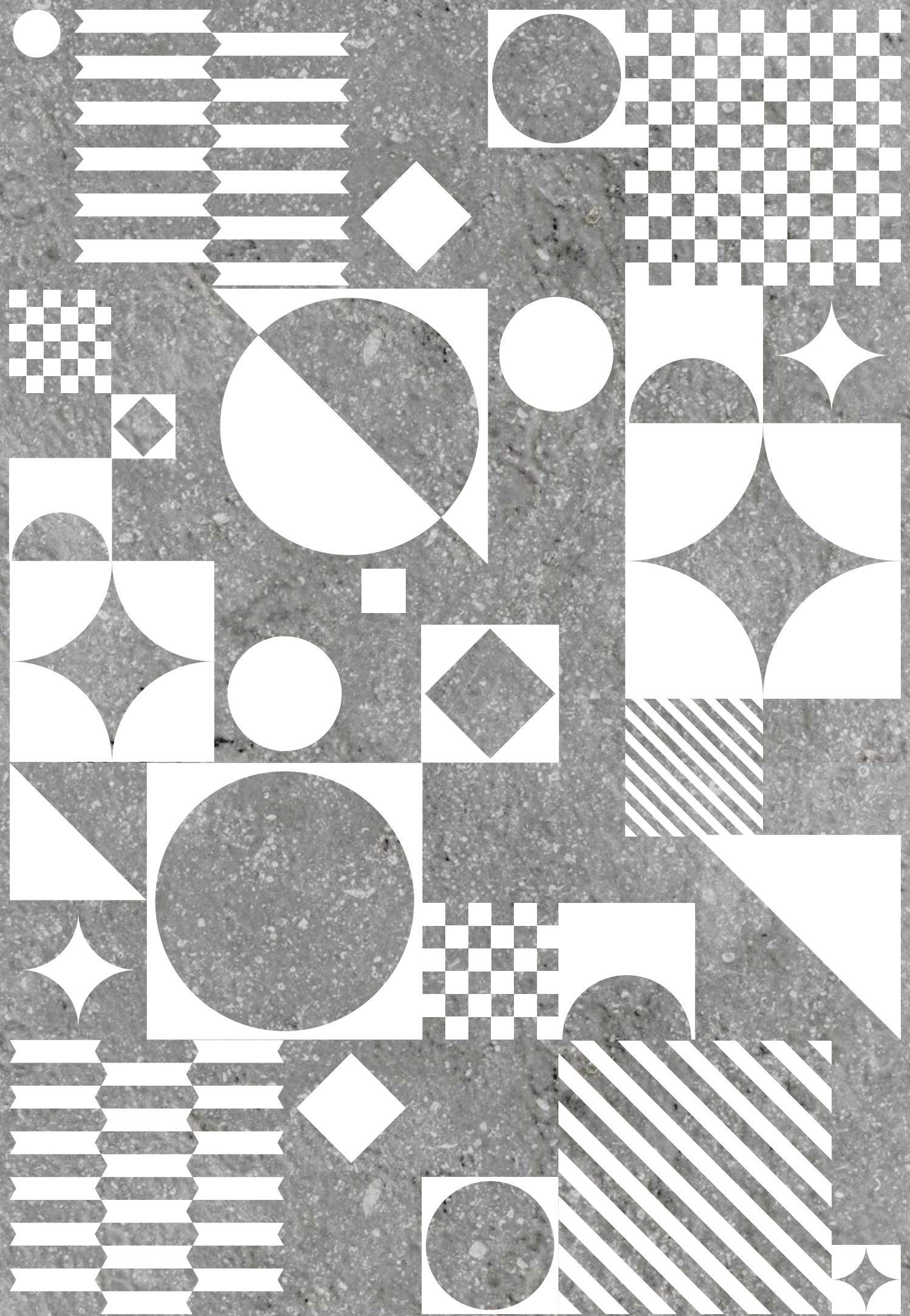


Duraker
ceramiche per tradizione

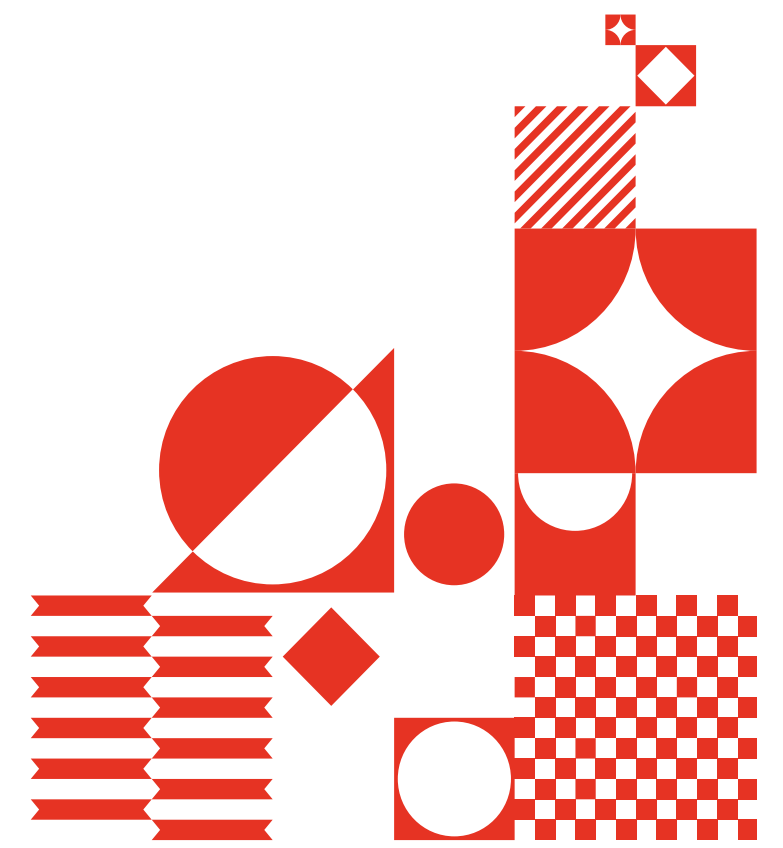


DURASTONE





 **Duraker**
ceramiche per tradizione



DURASTONE



DURASTONE 40 ELITE 20x20 + 20x40 + 40x40 cm



± 12 mm

DURASTONE 40

Gres porcellanato smaltato rettificato
Rectified glazed porcelain stoneware

FORMATI *SIZES*

20x20 | 20x40 | 40x40





TEPIC 20x20 + 20x40 + 40x40 cm

IMBALLI | PACKING LIST

FORMATI SIZES (cm)	SCATOLA BOX			PALLET		
	Pz	Mq	Kg	Sc	Mq	Kg
20x20	25	1	25	80	80	2000
20x40	14	1,12	28	65	72,80	1820
40x40	7	1,12	28	48	53,76	1344
40x40	5	0,80	20	76	60,80	1520

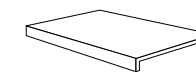
PEZZI SPECIALI | SPECIAL PIECES

BATTISCOPA
SKIRTING



P5 8x40 cm

ELEMENTO A "L"
"L" ELEMENT



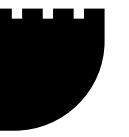
P13 20x40x4,5 cm
P13 40x40x4,5 cm



Gres porcellanato smaltato rettificato
Rectified glazed porcelain stoneware

± 12 mm

DURASTONE 40



ELITE

FORMATI SIZES

20x20 **06** | 20x40 **06** | 40x40 **06**

▲ DETTAGLIO | DETAIL

▼ VARIAZIONI GRAFICHE | GRAPHIC VARIATIONS



BULGARI

FORMATI SIZES

20x20 **06** | 20x40 **06** | 40x40 **06**

▲ DETTAGLIO | DETAIL

▼ VARIAZIONI GRAFICHE | GRAPHIC VARIATIONS



IMBALLI | PACKING LIST

FORMATI SIZES (cm)	SCATOLA BOX			PALLET		
	Pz	Mq	Kg	Sc	Mq	Kg
20x20	25	1	25	80	80	2000
20x40	14	1,12	28	65	72,80	1820
40x40	7	1,12	28	48	53,76	1344
40x40	5	0,80	20	76	60,80	1520

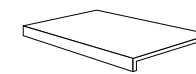
PEZZI SPECIALI | SPECIAL PIECES

BATTISCOPA
SKIRTING



P5 8x40 cm

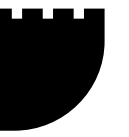
ELEMENTO A "L"
"L" ELEMENT



P13 20x40x4,5 cm
P13 40x40x4,5 cm



Gres porcellanato smaltato rettificato
Rectified glazed porcelain stoneware



± 12 mm

DURASTONE 40



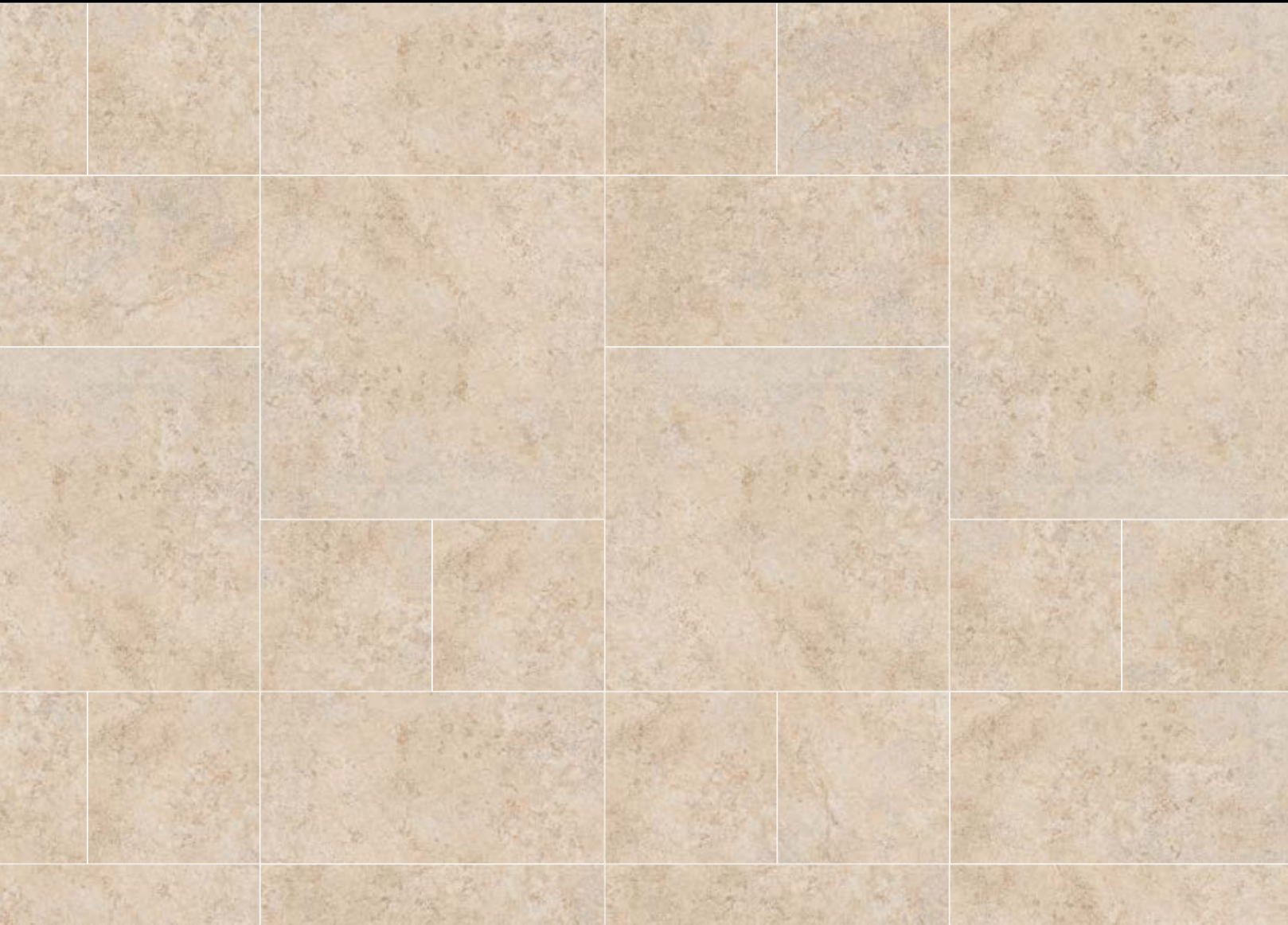
TEPIC

FORMATI SIZES

20x20 **06** | 20x40 **06** | 40x40 **06**

▲ DETTAGLIO | DETAIL

▼ VARIAZIONI GRAFICHE | GRAPHIC VARIATIONS



LACSTONE

FORMATI SIZES

20x20 **06** | 20x40 **06** | 40x40 **06**

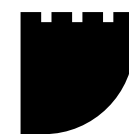
▲ DETTAGLIO | DETAIL

▼ VARIAZIONI GRAFICHE | GRAPHIC VARIATIONS





DOLOMITI 15x15 + 15x30 + 30x30 cm



± 9,5 mm

DURASTONE 30

Gres porcellanato smaltato rettificato
Rectified glazed porcelain stoneware

FORMATI *SIZES*

15x15 | 15x30 | 30x30



IMBALLI | PACKING LIST

FORMATI SIZES (cm)	SCATOLA BOX			PALLET		
	Pz	Mq	Kg	Sc	Mq	Kg
15x15	44	1	21	96	96	2000
15x30	26	1,17	24	72	84,24	1769
30x30	8	0,72	15	80	57,60	1200

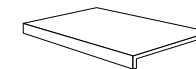
PEZZI SPECIALI | SPECIAL PIECES

BATTISCOPA
SKIRTING



P2 7x30 cm

ELEMENTO A "L"
"L" ELEMENT



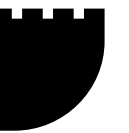
P12 15x30x4,5 cm



Gres porcellanato smaltato rettificato
Rectified glazed porcelain stoneware

± 9,5 mm

DURASTONE 30



ALPI

FORMATI SIZES

15x15 **36** | 15x30 **04** | 30x30 **03**



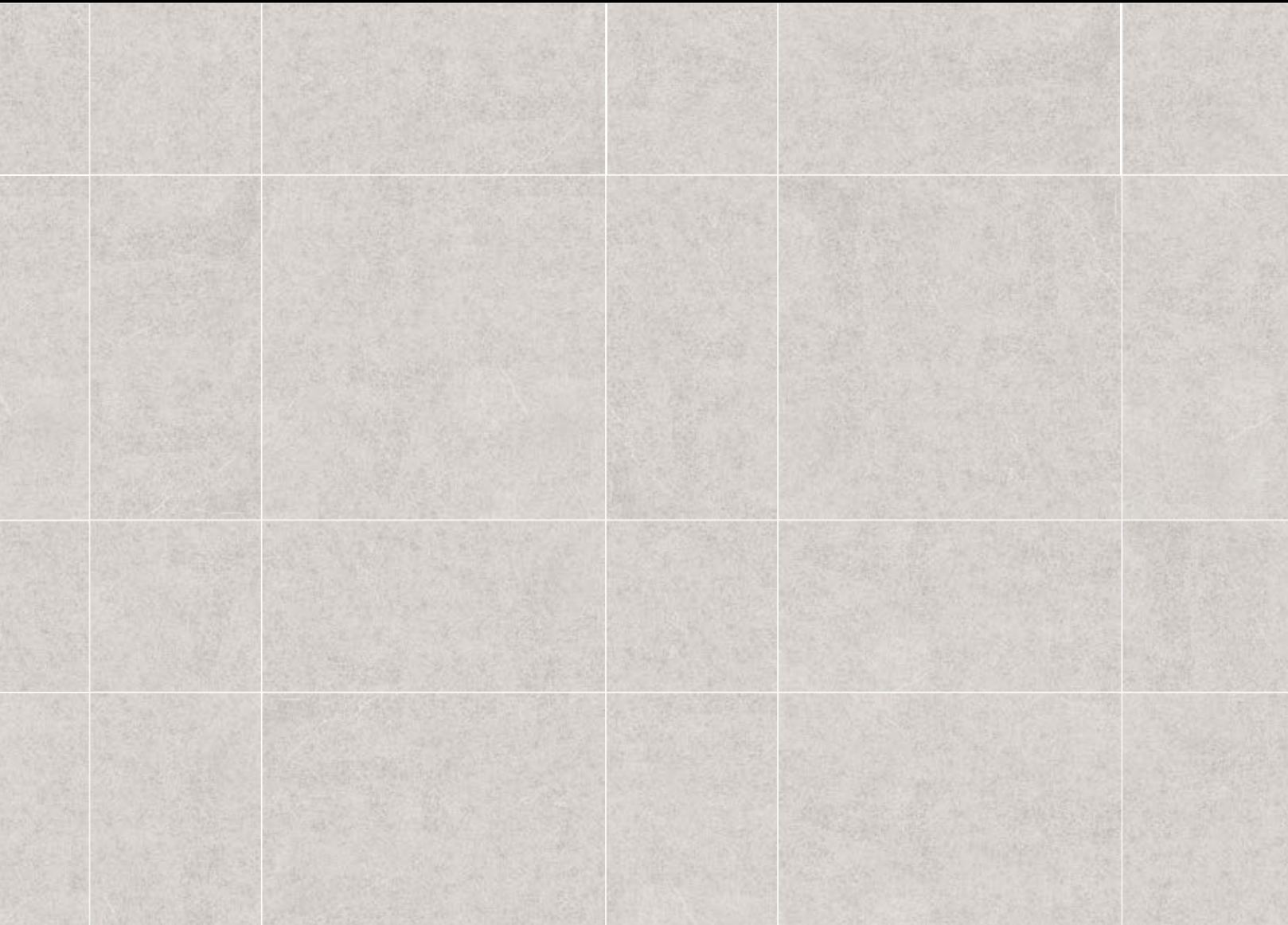
AMIATA

FORMATI SIZES

15x15 **36** | 15x30 **04** | 30x30 **03**

▲ DETAGLIO | DETAIL

▼ VARIAZIONI GRAFICHE | GRAPHIC VARIATIONS



▲ DETAGLIO | DETAIL

▼ VARIAZIONI GRAFICHE | GRAPHIC VARIATIONS



IMBALLI | PACKING LIST

FORMATI SIZES (cm)	SCATOLA BOX			PALLET		
	Pz	Mq	Kg	Sc	Mq	Kg
15x15	44	1	21	96	96	2000
15x30	26	1,17	24	72	84,24	1769
30x30	8	0,72	15	80	57,60	1200

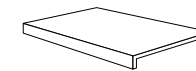
PEZZI SPECIALI | SPECIAL PIECES

BATTISCOPA
SKIRTING



P2 7x30 cm

ELEMENTO A "L"
"L" ELEMENT



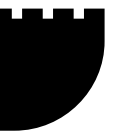
P12 15x30x4,5 cm



Gres porcellanato smaltato rettificato
Rectified glazed porcelain stoneware

± 9,5 mm

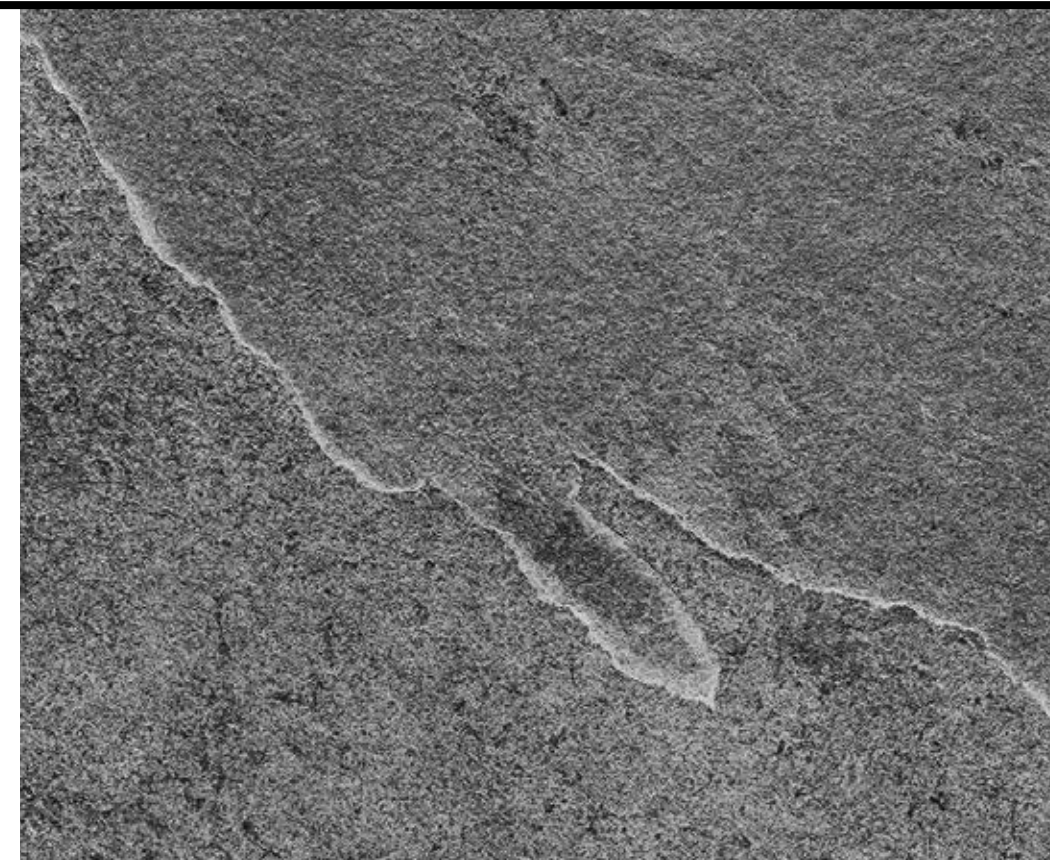
DURASTONE 30



FUMO

FORMATI SIZES

15x15 **36** | 15x30 **04** | 30x30 **03**

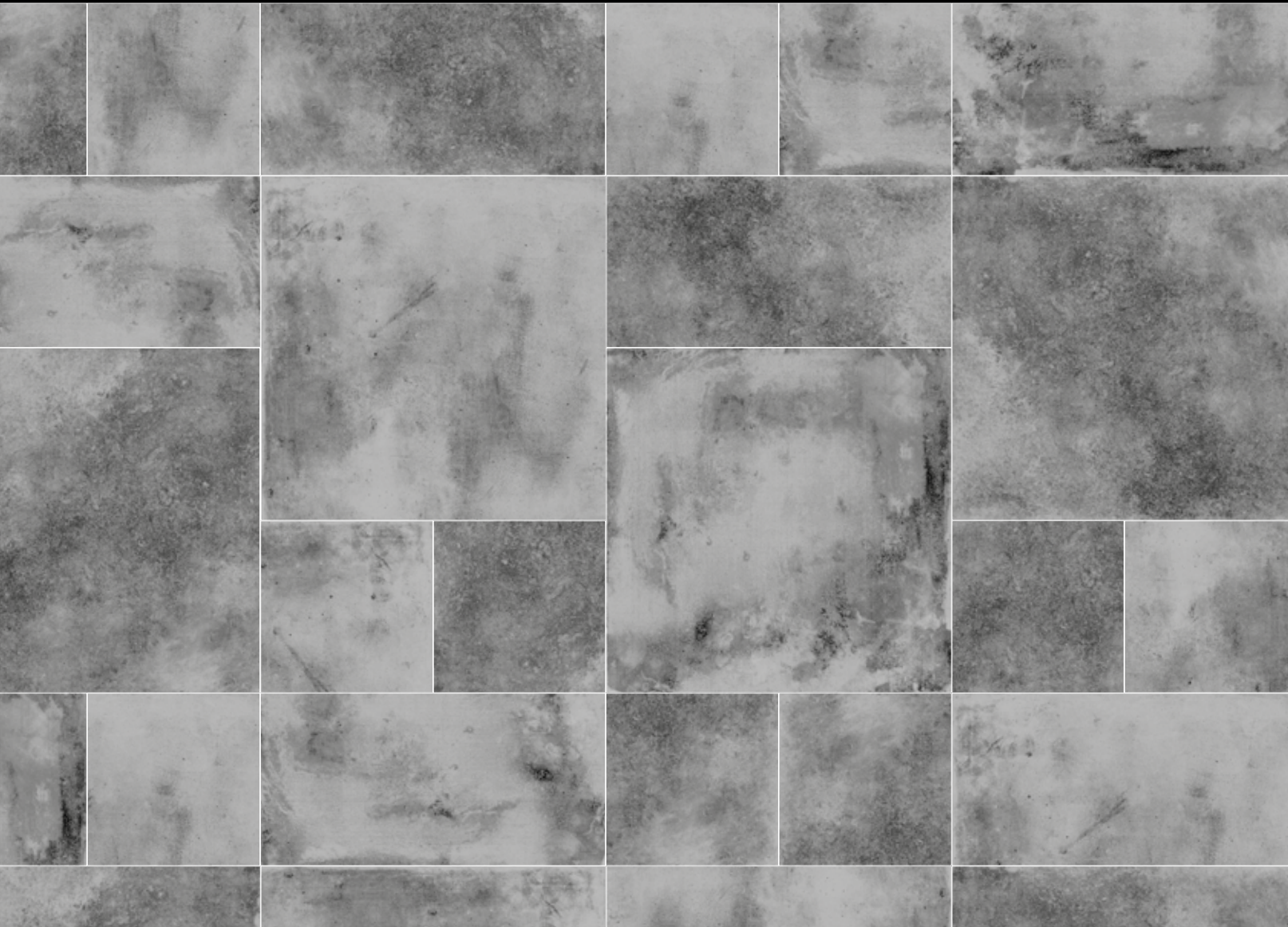


DOLOMITI

FORMATI SIZES

15x15 **36** | 15x30 **04** | 30x30 **03**

▲ DETTAGLIO | DETAIL



▼ VARIAZIONI GRAFICHE | GRAPHIC VARIATIONS

▲ DETTAGLIO | DETAIL



▼ VARIAZIONI GRAFICHE | GRAPHIC VARIATIONS



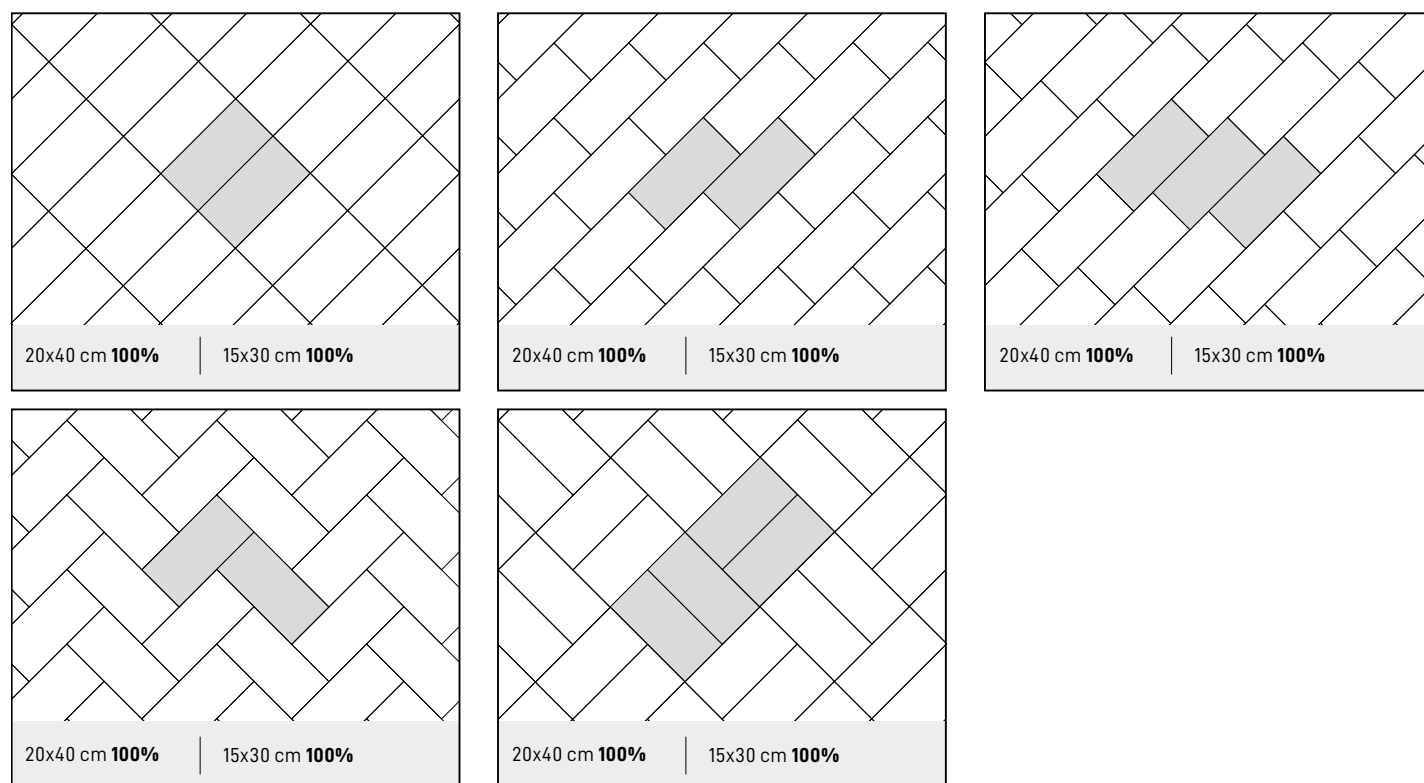
DURASTONE

CARATTERISTICHE TECNICHE | TECHNICAL FEATURES

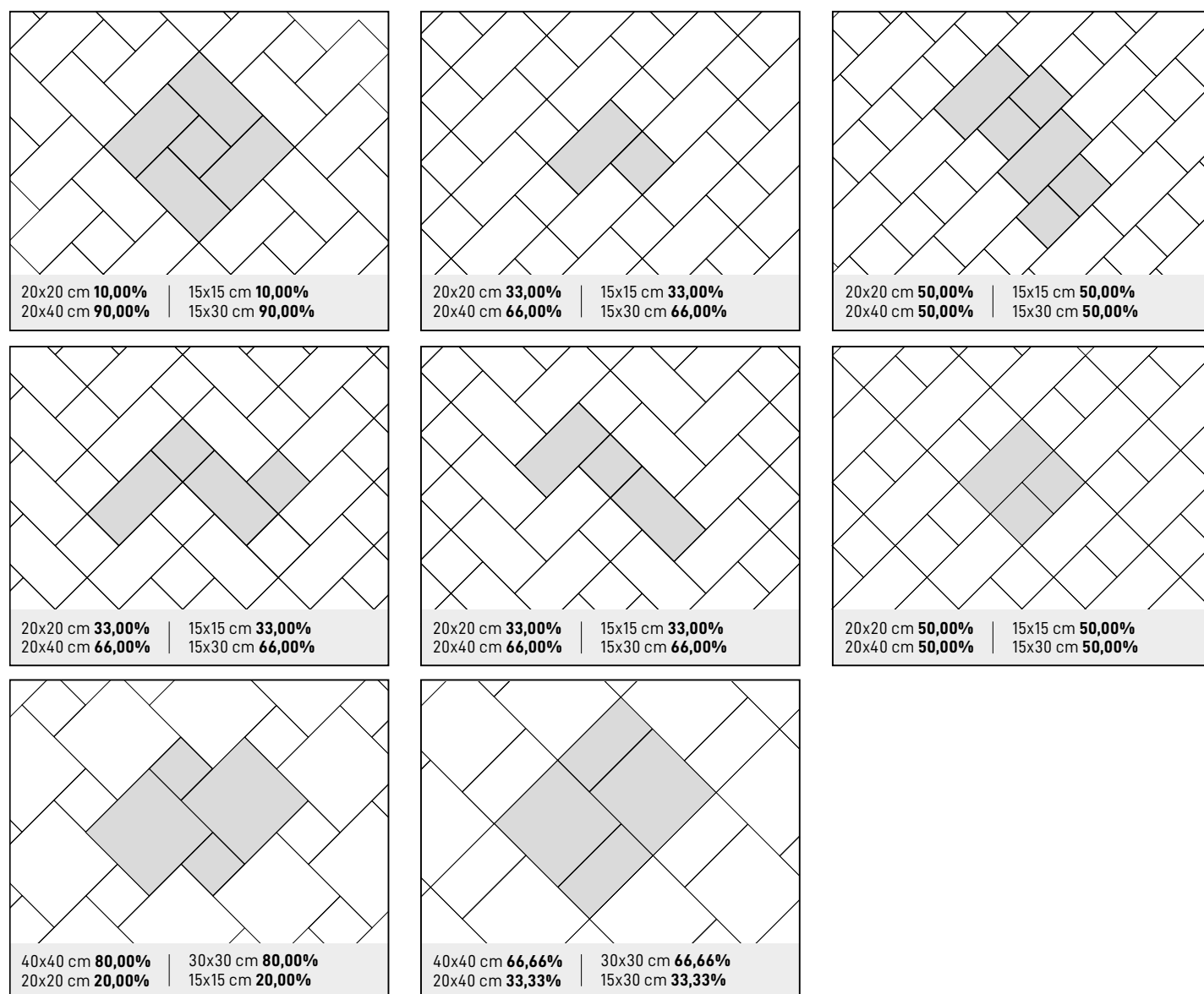
CARATTERISTICA TECHNICAL FEATURE	REQUISITO ISO 13006:2018 - G REQUIRED ISO 13006:2018 - G	REQUISITO IS 4457:2007 REQUIRED IS 4457:2007	VALORI DURASTONE VALUES DURASTONE	METODO DI PROVA TEST METHOD
DIMENSIONI E QUALITÀ DELLA SUPERFICIE DIMENSIONS AND SURFACE QUALITY				
Lunghezza e larghezza Length and width	≤ ± 0.3 %	≤ ± 0.5 %	± 0.1 %	UNI EN ISO 10545-2
Spessore Thickness	≤ ± 5 %	≤ ± 5 %	± 4.0 %	
Rettilineità degli spigoli Straightness of sides	≤ ± 0.3 %	≤ ± 0.2 %	± 0.1 %	
Ortogonalità Rectangularity	≤ ± 0.3 %	≤ ± 0.2 %	± 0.1 %	
Curvatura del centro Centre curvature (% Max. Dev.)	≤ ± 0.4 %	≤ ± 0.3 %	± 0.2 %	
Curvatura dello spigolo Edge curvature (% Max. Dev.)	≤ ± 0.4 %	≤ ± 0.3 %	± 0.2 %	
Deformazione degli angoli Corner Warpage (% Max. Dev.)	≤ ± 0.4 %	≤ ± 0.3 %	± 0.2 %	
Qualità della superficie Surface quality	Min. 95% di piastrelle senza difetti visibili. Min 95% of tiles will be free from visible defects		Conforme Complies	
PROPRIETÀ FISICHE PHYSICAL PROPERTIES				
Assorbimento dell'acqua Water absorption	≤ 0,5%	≤ 0,5%	≤ 0,5%	UNI EN ISO 10545-3
Modulo di rottura Modulus of Rupture [N/mm ²]	≥ 35 N/mm ²	≥ 35 N/mm ²	>35	UNI EN ISO 10545-4
Sforzo di rottura Breaking strength	Min. 1.300 N	Min. 1.300 N	Min. 2.500 N	UNI EN ISO 10545-4
Espansione all'umidità Moisture expansion	Metodo di prova disponibile Test method available	N/A	Max 0.02 mm/m	UNI EN ISO 10545-10
Durezza della superficie ai graffi (Mohs) Scratch Hardness of surface (Mohs)	N/A	N/A	Min 6	IS 13630 Part 13
Resistenza all'abrasione Resistance to abrasion	Max. 175	Max. 175	Max. 140	UNI EN ISO 10545-7
Coefficiente di dilatazione termica lineare alla temperatura ambiente di 100° C Coefficient of linear thermal expansion from ambient temperature to 100° C	Metodo di prova disponibile Test method available	N/A	Max. 6x10 ⁻⁶ - 'K ⁻¹ Max.	UNI EN ISO 10545-8
Resistenza agli sbalzi termici Thermal shocks resistance	Richiesta Required	N/A	Resistente a 10 cicli 10 cycle passed	UNI EN ISO 10545-9
Resistenza al cavillo Crazing resistance	N/A	N/A	Resistente a 4 cicli 4 cycle passed	UNI EN ISO 10545-11
Resistenza all'urto Impact resistance	Metodo di prova disponibile Test method available	N/A	Min. 0,55	UNI EN ISO 10545-5
Resistenza al gelo Frost resistance	Richiesto Request	Richiesto Request	Resistente a 100 cicli 100 cycle passed	UNI EN ISO 10545-12
RESISTENZA ALLE MACCHIE E AGLI AGENTI CHIMICI STAIN & CHEMICAL RESISTANCE				
Resistenza alle macchie Staining resistance	Minimo classe 3 Minimum class 3	N/A	Min. Classe 2 Min. Class 2	UNI EN ISO 10545-14
Resistenza ai prodotti chimici domestici Resistance to household chemicals	Minimo B Minimum B	Metodo di prova disponibile Test method available	Classe UA Min. Class UA	UNI EN ISO 10545-13
Resistenza agli acidi e agli alcali (ad eccezione dell'acido fluoridrico e dei suoi composti) Resistance to acids and alkalis (with exception of hydrofluoric acid and its compounds)	Valori dichiarati Declared values	Metodo di prova disponibile Test method available	Classe Class ULA (Low Conc) UHA (High Conc)	UNI EN ISO 10545-13
Resistenza a HNO ₃ concentrato e H ₂ SO ₄ Resistance to Concentrated HNO ₃ & H ₂ SO ₄	N/A	Loss of mass not exceed 1,5%	Loss Less Than 1.0%	IS 4457 ANNEX G
Resistenza allo scivolamento Slip resistance classification	da 6° ≤ 10° R9 > 10° ≤ 19° R10 > 19° ≤ 27° R11	da 6° ≤ 10° R9 > 10° ≤ 19° R10 > 19° ≤ 27° R11	R10	DIN 51130



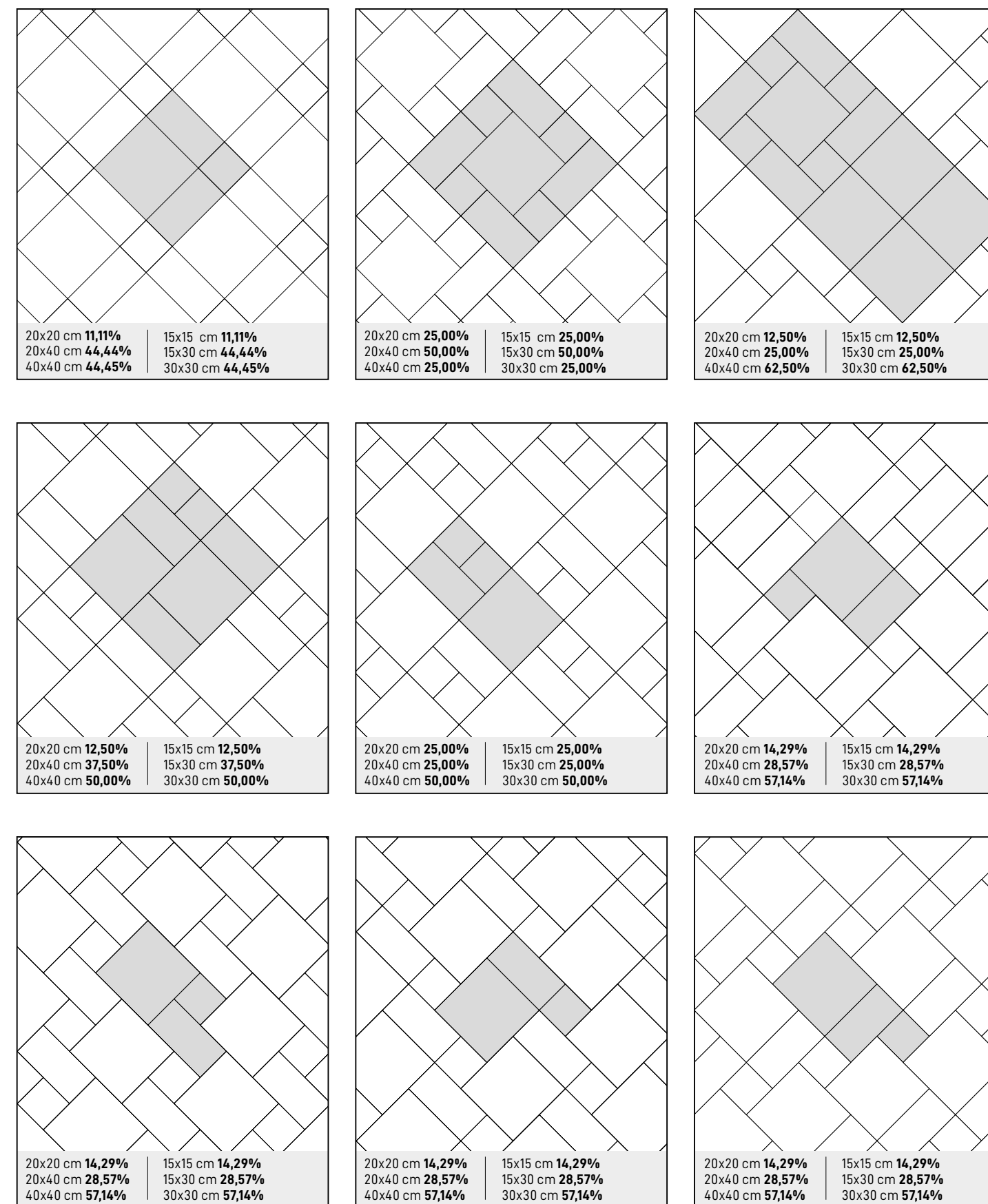
1 FORMATO (RETTANGOLARE) / 1 SIZE (RECTANGULAR)

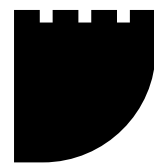
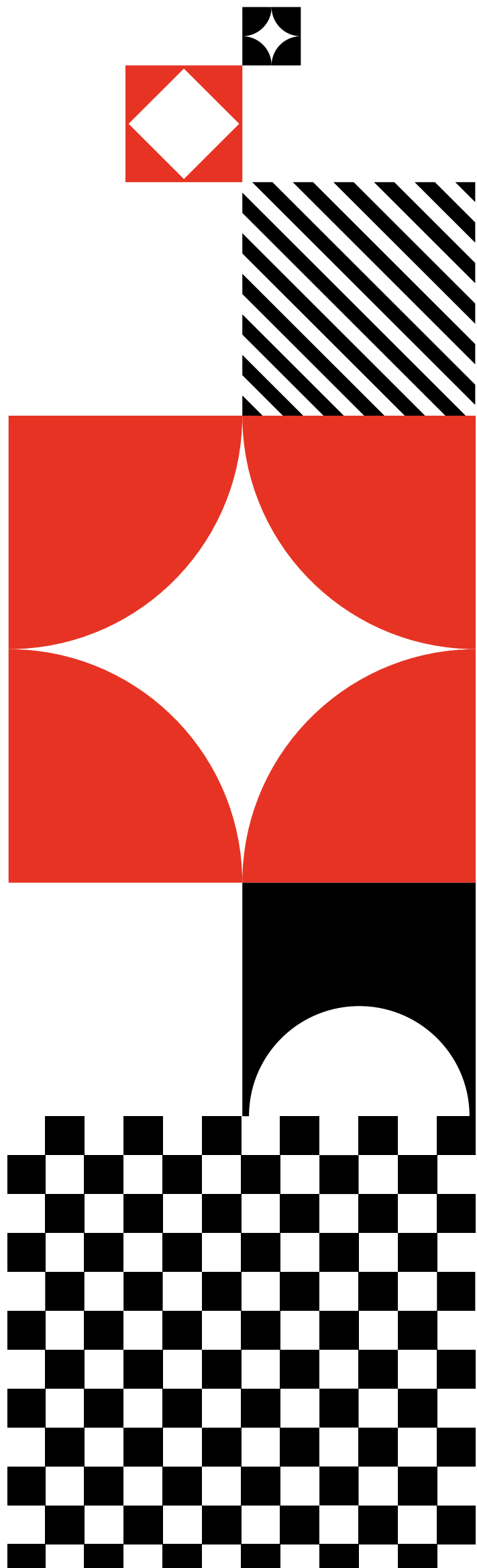


2 FORMATI / 2 SIZES



3 FORMATI / 3 SIZE





Ceramiche Duraker S.r.l.
 Loc. Riello, 82015 Durazzano (BN)
 tel. e fax +39 0823 719036
 duraker@duraker.it



**SCANSIONA
 & NAVIGA**
duraker.it

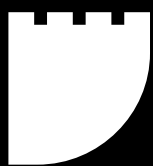
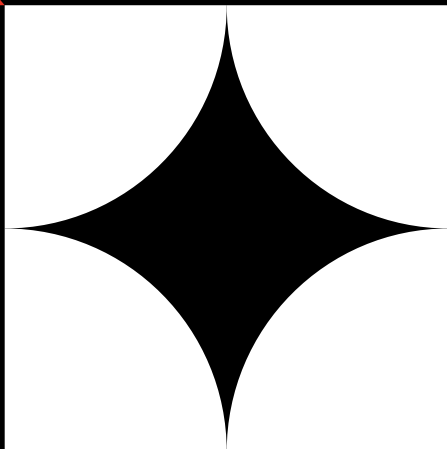
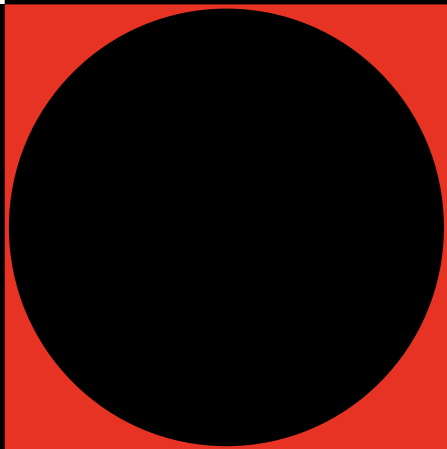
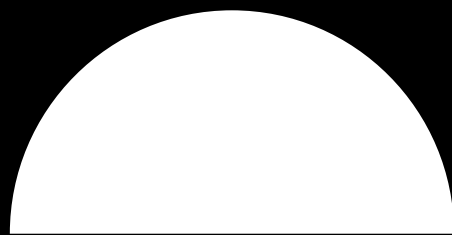
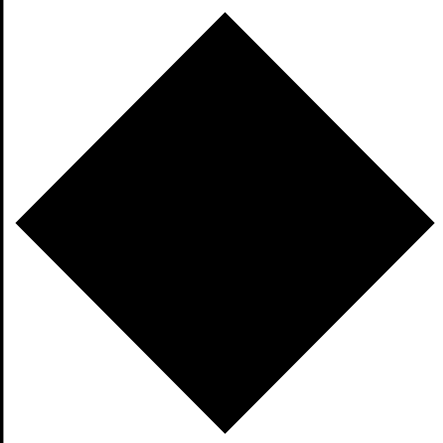
Campionatura di modico valore
 ai sensi del DPR 633/72
 e successive modifiche art. 2.

© CERAMICHE DURAKER 12/2023

Le informazioni contenute nel presente catalogo sono il più possibile
 esatte, ma non sono da ritenersi legalmente vincolanti.
 Per esigenze di produzione l'Azienda si riserva il diritto di apportare
 eventuali modifiche che si rendessero necessarie.
 Peso, colori e misure sono soggetti alle inevitabili variazioni tipiche
 del processo di cottura della ceramica.
 Per ragioni tecniche di stampa i toni riprodotti possono presentare
 delle alterazioni di colore rispetto ai campioni originali.

CERAMICHE DURAKER SI RISERVA LA FACOLTÀ DI MODIFICARE LE
 INFORMAZIONI TECNICHE RIPORTATE IN QUESTO CATALOGO.





Ceramiche Duraker S.r.l.
Loc. Riello, 82015 Durazzano (BN)
tel. e fax +39 0823 719036
duraker@duraker.it
www.duraker.it